

VULNERABLE POPULATION

SENIORS Ages 55+

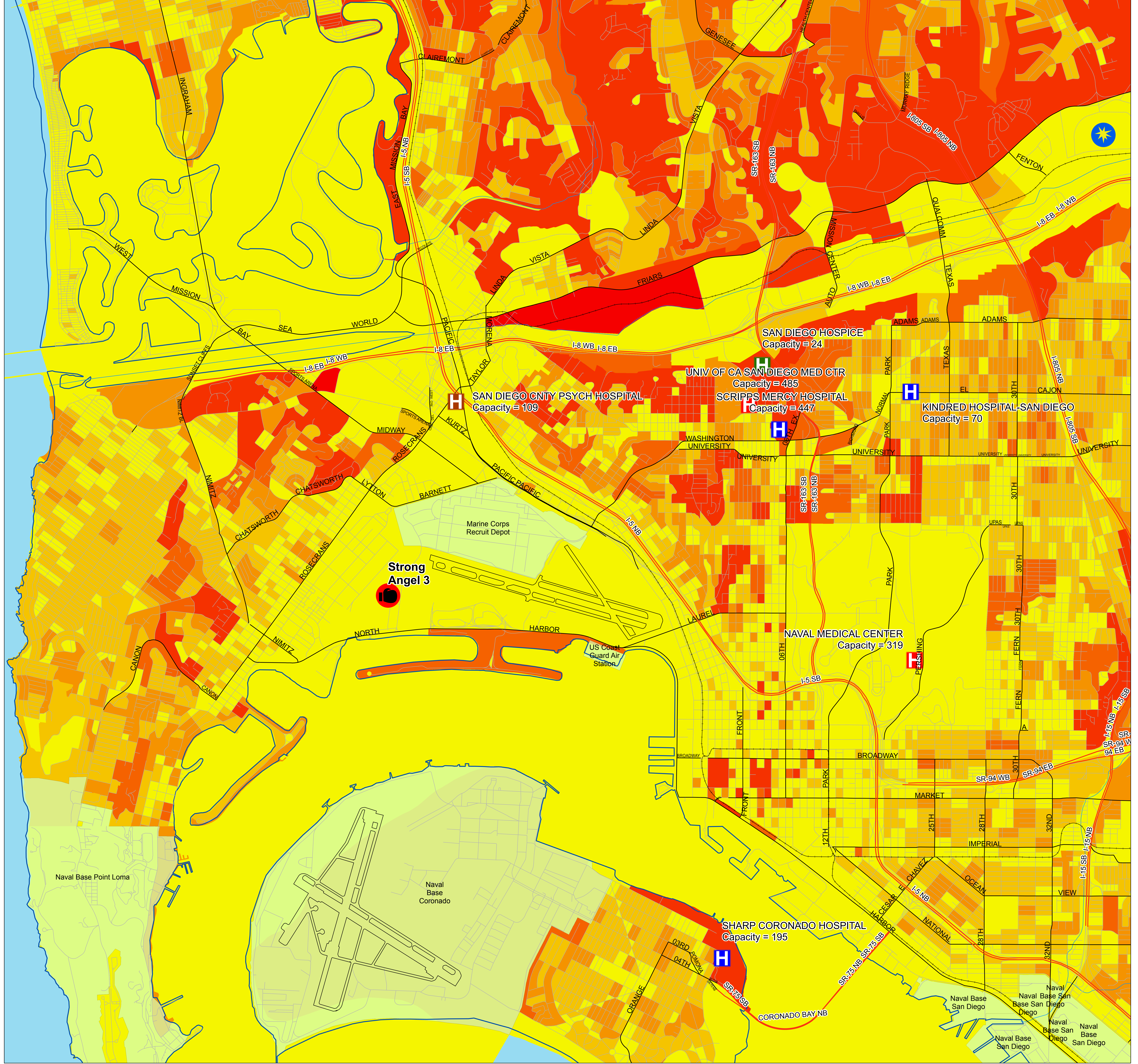
**Seniors by Census Block
55 and Over**

- 10
- 25
- 50
- 100
- 500
- > 500

Hospitals and Care Facilities

Facility Type

- Children's Hospital
- Hospice
- Hospital
- Hospital and Mental
- Medical Center
- Mental
- Outbreak Location
- Strong Angel 3 Base
- Military Facilities
- Railroad
- Freeways
- Major Roads
- Roads



ESRI
SANDAG
SanGIS
We Have San Diego Covered!

NORTH
Map Date: August 24, 2006
Creation Time: 2011 hours
1:15,000